



Continuous Radon Monitor Model 1030™

Model 1030™

Our Most Sensitive Monitor Yet

- Multi solid-state detector for highest precision
- OneRADON for desktop, mobile** and cloud-enabled
- Onboard environmental sensors
- Integrated tamper sensors and tripod mount
- Dual test storage, 300h battery life



About the 1030

Model 1030 is our most sensitive professional grade Continuous Radon Monitor. The 6-chamber design paired with our most advanced detection algorithm allows for the lowest measurement uncertainty while further decreasing measurement noise and preventing radio frequency interference.

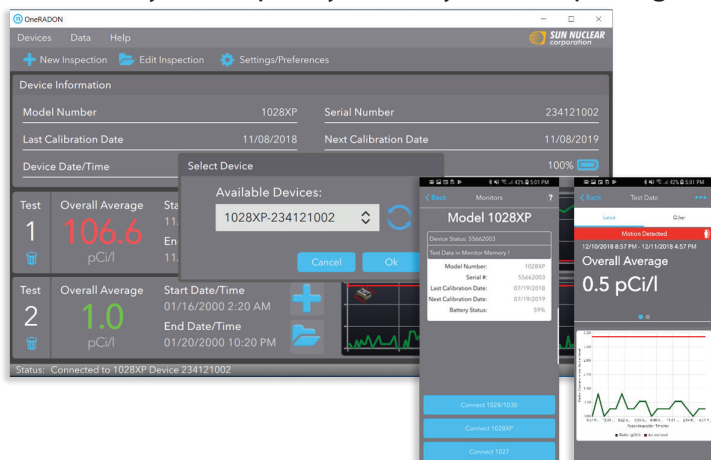
Model 1030 is NRPP-, C-NRPP, and NRSB-approved. It provides even more test setup and programming flexibility than Model 1028 as well as the ability to store two test data sets with up to 1,650 data points. In addition to a standard tamper sensor and programmable PIN protection, this monitor comes with on-board humidity, pressure, and temperature sensors.

It is fully compatible with our OneRADON Software suite for desktop and mobile applications (adapters required), for complete test analysis and report generation. Model 1030 comes ready for use with a calibration certificate, power supply, and USB cable.

OneRADON™ Mobile and Desktop

ADVANCED SOFTWARE FOR YOUR CRM

OneRADON is your all-in-one radon test, analysis and reporting software. Connect to your SunRADON 1027, 1028, 1028 XP, or 1030 monitor. Set, sync and save your inspection company information on the app one-time for customized settings. You're ready to complete your analysis and reporting on-site!



- Device data import via USB from all supported SunRADON CRMs
- Mobile App Bluetooth connectivity to 1028-XP
- Supports Windows and MAC PCs, and Mobile iOS and Android devices
- Full, custom report and invoice generation (PDF)
- Smart Mobile-to-Cloud Synchronization of Test Data, Inspection Details, as well as Device Information.



Continious Radon Monitor Model 1030™

Specifications

Radon Detection

Classification:	Active Continuous Radon Monitor
Type:	Solid State Photodiode Detector
Detector Design:	Passive Airflow Diffusion
Chamber #:	6
Range:	0.1 - 9999 pCi/L
Nominal Sensitivity:	15 cph per pCi/L
Background Typical:	0.2 pCi/L
Background Max:	0.5 pCi/L
Uncertainty :	3%
(1 day, 1 sigma)*	

Test Setup

Measurement Units:	pCi/L or Bq/m3
Data Point Storage Cap.:	1,650
Test Storage Cap.:	2
Duration:	1h until memory full
Delay:	0 -48 hours
Interval:	0.5-24 hours
Auto-Power Off:	-

Sensors

Temp/Humidity/Pressure:	Yes
VOC/CO2:	-
Motion Sensor:	Yes

Operating Range

Temperature:	45 - 95 F
Rel Humidity (non condensing):	20 - 90%

OneRADON Software Compatability

Win:	Yes
MacOS:	Yes
iOS:	Yes
Android:	Yes
Cloud:	Yes

Communication

Mobile:	Airconsole/USB
Desktop:	USB
Cellular Wireless:	-

Approvals

US NRPP:	Yes
CA C-NRPP:	Yes
NRSB:	Yes
Calibration Certificate:	Yes

General

Dimensions:	5.5" x 4.4" x 9.6"
Weight:	3.75 lbs
Power Supply:	AC-USB, 5VDC, 100-240V
Battery Type:	(4) C Batteries
Battery Life:	300h
Display:	Monochrome LCD Line
Controls:	Membrane Switch
Tamper Protection:	4-digit PIN
Housing:	Metal
Tripod Screw Mount:	Yes

Compliance

Compliance:	CE, RoHS, EN61010/61326
Warranty:	90 days
*ANSI-AARST MS-PC 2015	



WWW.HOSKIN.CA

• INTEGRATED SYSTEMS • RENTALS • SERVICE
• ENVIRONMENTAL • INSTRUMENTATION • MATERIALS TESTING

Vancouver | Oakville | Montréal | Edmonton