



Continuous Radon Monitor Model 1028™ XP

Model 1028™ XP

Trusted Technology, Designed for the Future

- Bluetooth & Intuitive Touchscreen
- OneRADON for Desktop, and full Mobile and Cloud support
- Environmental Sensor and Cellular Module upgrades
- Integrated tamper Sensors and Tripod Mount
- 10 Test Storage Slots, 300h Battery Life



About the Model 1028 XP

Model 1028-XP is our most advanced professional grade Continuous Radon Monitor. Its detector technology is based on the trusted 1028 design that utilizes advanced detection algorithm resulting in high sensitivity, while also providing superb immunity to external radio interference. The large, high-definition touch screen interface paired with an on-board Bluetooth module allows for the most flexibility of setup and use yet.

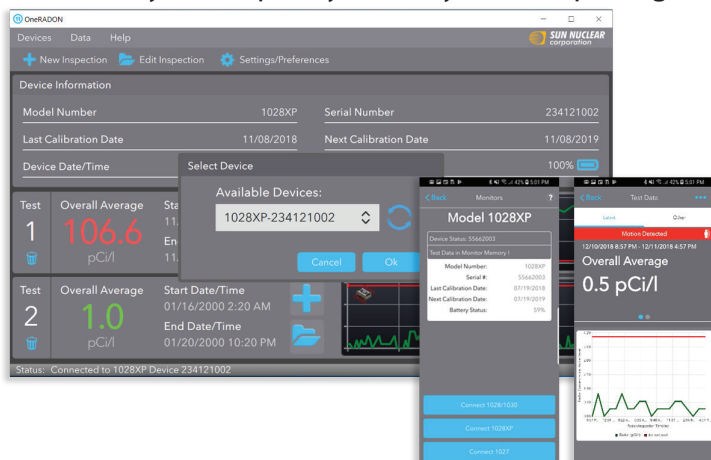
Model 1028-XP is NRPP- and C-NRPP and NRSB approved. This professional grade Continuous Radon Monitor is equipped with a tamper sensor, programmable PIN protection, and can be upgraded with optional Environmental as well as LTE wireless modules, both measuring temperature, pressure, humidity, tVOC*, and eCO2.

Its fully compatible with our OneRADON Software suite for desktop and mobile applications, for complete test analysis and report generation. In addition, the optional LTE upgrade module allows for real time data upload and remote control via OneRADON Cloud Services. Model 1028-XP comes ready for use with a calibration certificate, power supply, and USB cable.

OneRADON™ Mobile and Desktop

ADVANCED SOFTWARE FOR YOUR CRM

OneRADON is your all-in-one radon test, analysis and reporting software. Connect to your SunRADON 1027, 1028, 1028 XP, or 1030 monitor. Set, sync and save your inspection company information on the app one-time for customized settings. You're ready to complete your analysis and reporting on-site!



- Device data import via USB from all supported SunRADON CRMs
- Mobile App Bluetooth connectivity to 1028-XP
- Supports Windows and MAC PCs, and Mobile iOS and Android devices
- Full, custom report and invoice generation (PDF)
- Smart Mobile-to-Cloud Synchronization of Test Data, Inspection Details, as well as Device Information.



Continious Radon Monitor Model 1028™ XP

Specifications

Radon Detection

Classification:	Active Continuous Radon Monitor
Type:	Solid State Photodiode Detector
Detector Design:	Passive Airflow Diffusion
Chamber #:	1
Range:	0.1 - 9999 pCi/L
Nominal Sensitivity:	2.7 cph per pCi/L
Background Typical:	0.2 pCi/L
Background Max:	0.5 pCi/L
Uncertainty :	7%
(1 day, 1 sigma)*	

Test Setup

Measurement Units:	pCi/L or Bq/m3
Data Point Storage Cap.:	10,000
Test Storage Cap.:	10
Duration:	1h - 999h
Delay:	0 -48 hours
Interval:	1 - 12 hours
Auto-Power Off:	15 - 60 min

Sensors

Temp/Humidity/Pressure:	Optional
VOC/CO2:	Optional
Motion Sensor:	Yes

Operating Range

Temperature:	45 - 95 F
Rel Humidity (non condensing):	10 - 90%

OneRADON Software Compatability

Win:	Yes
MacOS:	Yes
iOS:	Yes
Android:	Yes
Cloud:	Yes

Communication

Mobile:	Bluetooth
Desktop:	USB
Cellular Wireless:	Optional

Approvals

US NRPP:	Yes
CA C-NRPP:	Yes
NRSB:	Yes
Calibration Certificate:	Yes

General

Dimensions:	7.5" x 4.8" x 2.9 "
Weight:	1.36 lbs
Power Supply:	AC-USB, 5VDC, 100-240V
Battery Type:	(4) AA Batteries
Battery Life:	300h
Display:	2.8" Color TFT
Controls:	Resistive Touchscreen
Tamper Protection:	4-digit PIN
Housing:	Molded Plastic
Tripod Screw Mount:	Yes

Compliance

Compliance:	CE, RoHS, FCC, BT, EN61010/61326
Warranty:	90 days
*ANSI-AARST MS-PC 2015	



WWW.HOSKIN.CA

• INTEGRATED SYSTEMS • RENTALS • SERVICE
• ENVIRONMENTAL • INSTRUMENTATION • MATERIALS TESTING

Vancouver | Oakville | Montréal | Edmonton