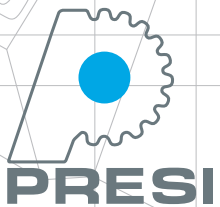


# MECATECH

250 SPI | 250 SPC | 250 DPC  
300 SPC | 300 SPS



 POLISHING

MECATECH  
250 SPI | 250 SPC  
250 DPC | 300 SPC  
300 SPS



# MECATECH

## THE AUTOMATIC POLISHING MACHINE RANGE BY PRESI

User-friendly, reliable and robust, the new MECATECH range of automatic polishing machines allows both manual and automatic use. The machines are equipped with platens from Ø200 to 300 mm and have a motor power from 750W to 1500W.

🕒 **POWERFUL**

📏 **ROBUST**

👍 **RELIABLE**

### Easy maintenance

- Removable over-bowl easy to clean.
- The tank incorporates an anti-splash device that prevents any projection

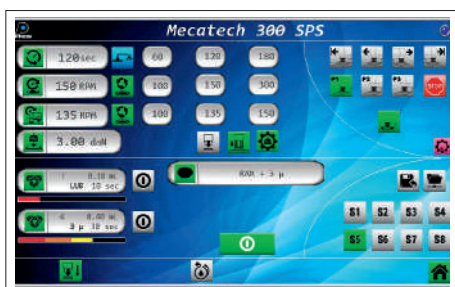


### Large color touchscreen

- 7" TFT LCD color display, 16/9
- Ergonomic and intuitive user interface
- Many features : speed and direction of rotation (head and platen), sprinkling, drying, stage duration, applied force, management of Distritech 5.1 and the 2 tanks integrated

### Programming and memorization

- Easy creation and modification of polishing methods
- Perfect reproducibility of methods
- Password protection (4 levels)
- A USB connection makes it possible to save the integrity of the registered polishing methods and ensures the evolution of the material.



### Durability

The body and the composite tank exclude any oxidation. It allows a better shock resistance

### Emergency stop button

Convenient and quick access to immediately stop its operation.

## IMAGINE YOUR MACHINE TAILOR-MADE

WITH THE COLOR OF YOUR CHOICE !

Opt for a colour of the hood in the RAL color of your choice



### Lubrication

2 tanks with peristaltic pump allow the supply of lubricants or abrasives for a precise dosing.

### Polishing head

- Powerful motor gearing driven by a frequency inverter
- Automatic polishing head locking when the cycle starts
- Lateral shifting of the head to completely release the polishing platen and work in manual mode (except for the 300 SPS model)
- Programmable material removal in central pressure

### Optimum polishing quality

A proportional electronic valve enables the air pressure to be measured and stabilised at a precise value. The force applied to the samples is perfectly constant and reproducibility is guaranteed.

### Motor with frequency inverter

- Constant torque and speed whatever the applied load
- Precise speed variation
- Gives exceptional power to the head and the platen
- Progressive acceleration and immediate stop
- 2 directions of rotation (head and platen)

### LED lighting

Removes shadow areas under the polishing head giving the user better visual control during operation.

## ROBUSTNESS AND CHARACTER

With its affirmed style and edged lines, this new range is distinguished by its design with an easily recognizable sleek and refined carbon look.



# MECATECH RANGE

PLATEN DIAMETERS : 200 to 250 mm



## MECATECH

### 250 SPI

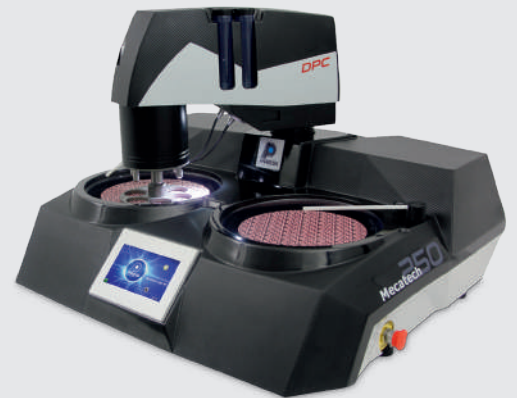
1 platen | 4 pistons  
Individual pressure



## MECATECH

### 250 SPC

1 platen | 6 pistons  
Central and individual pressure



## MECATECH

### 250 DPC

2 platens | 6 pistons  
Central and individual pressure

PLATEN DIAMETERS : 250 to 300 mm



## MECATECH

### 300 SPC

1 platen | 6 pistons  
Central and individual pressure

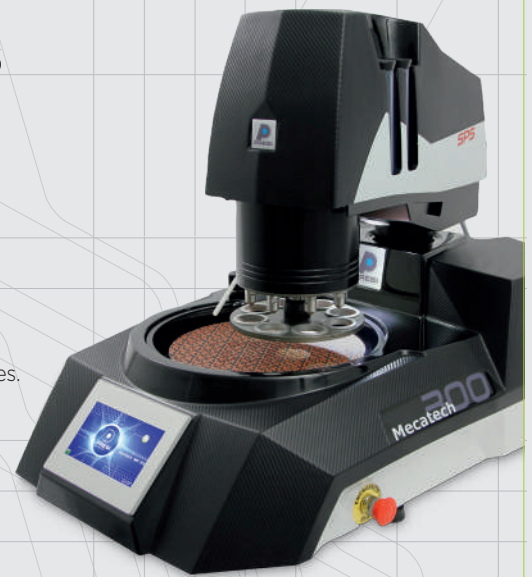
## MECATECH 300 SPS

1 platen | 8 pistons  
Central and individual pressure

### SWEEPING FUNCTION

This function optimizes the use of consumables and improves samples flatness.

Productivity is improved by increasing the capacity of the polishing head from 6 to 8 samples.



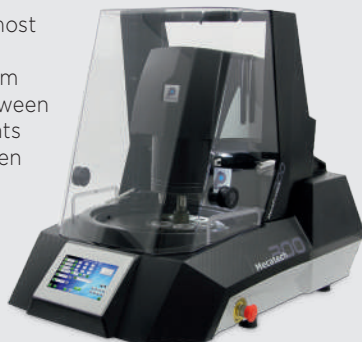
## OPTIONAL

### MECAPROTECT

This protection hood meets the most stringent safety requirements. It perfectly isolates the machine from the operator. The connection between the machine and the hood prevents the MECATECH from working when the hood is open.

MECAPROTECT  
250 | Ref. 67915

MECAPROTECT  
300 | Ref. 67945



### DISTRITECH 5.1<sup>\*</sup> | Ref. 67890

#### Abrasive suspensions dispenser device.

- 5 bottles of 500 cc
- Each abrasive suspension dispenser is managed by the machine
- Each bottle has its own distribution circuit (no risk of pollution)
- Colloidal silica distribution with automatic rinsing function (no risk of crystallisation)
- LED illuminated display indicates the bottle in operation



\* Compatible with the entire MECATECH range

MECATECH AUTOMATIC POLISHING MACHINES

	250 SPI	250 SPC	250 DPC	300 SPC	300 SPS
Reference	67910	67920	67930	67940	67950
Number of motors	1	1	2	1	1
Number of polishing platen	1	1	2	1	1
Diameter of the polishing platen	200 to 250 mm	200 to 250 mm	200 to 250 mm x2	250 to 300 mm	300 mm
Rotation speed	20 to 700 RPM	20 to 700 RPM	20 to 700 RPM	20 to 700 RPM	20 to 700 RPM
Rotation direction : clockwise and counter-clockwise	✓	✓	✓	✓	✓
Nominal power S1	750 W	750 W	2 x 750 W	900 W	900 W
Nominal power S3	1110 W	1100 W	2 x 1100 W	1500 W	1500 W
Torque compensation	Automatic	Automatic	Automatic	Automatic	Automatic
Immediate stop of the platen	Automatic	Automatic	Automatic	Automatic	Automatic
Progressive acceleration of the platen	Automatic	Automatic	Automatic	Automatic	Automatic
Drying function	600 RPM	600 RPM	600 RPM	600 RPM	600 RPM
Spindle on bearing	✓	✓	✓	✓	✓
Base platen + anti-vibration seals	✓	✓	✓	✓	✓
Additional removable bowl	✓	✓	✓	✓	✓
Splash guard	✓	✓	✓	✓	✓
High strength mechanically welded + painted steel chassis	✓	✓	✓	✓	✓
Body RIM injection	✓	✓	✓	✓	✓
16/9 color TFT LCD touch screen 7"	✓	✓	✓	✓	✓
Simplified service and maintenance without dismantling	✓	✓	✓	✓	✓
Power supply	230V 1P	230V 1P	230V 1P	230V 1P	230V 1P
Frequency	50 - 60 Hz	50 - 60 Hz	50 - 60 Hz	50 - 60 Hz	50 - 60 Hz
Max. current	8 A	8 A	8 A	8 A	8 A
Air pressure	5-10 bars	5-10 bars	5-10 bars	5-10 bars	5-10 bars
Width	510 mm	510 mm	920 mm	620 mm	620 mm
Depth	810 mm	810 mm	735 mm	875 mm	875 mm
Height	665 mm	665 mm	665 mm	680 mm	700 mm
Weight	73 kg	73 kg	98 kg	82 kg	96 kg
Water inlet	ø12 mm	ø12 mm	ø12 mm	ø12 mm	ø12 mm
Water outlet	ø32 mm	ø32 mm	ø32 mm	ø32 mm	ø32 mm
Compressed air	ø10 mm	ø10 mm	ø10 mm	ø10 mm	ø10 mm

POLISHING HEADS

	250 SPI	250 SPC	250 DPC	300 SPC	300 SPS
Individual pressure	✓	✓	✓	✓	✓
Central pressure	-	✓	✓	✓	✓
Mounted samples	✓	✓	✓	✓	✓
Non mounted samples	-	✓	✓	✓	✓
Rectangular samples	✓	✓	✓	✓	✓
Rotation speed	20 to 150 RPM	20 to 150 RPM	20 to 150 RPM	20 to 150 RPM	20 to 150 RPM
Rotation direction : clockwise and counter-clockwise	✓	✓	✓	✓	✓
Motor power	180 W	180 W	180 W	270 W	270 W
Force per specimen	0,1-5 daN	0,1-5 daN	0,1-5 daN	0,1-5 daN	0,1-5 daN
Maximum power available	20 daN	30 daN	30 daN	30 daN	40 daN
Material removal measurement with automatic stop	-	✓	✓	✓	✓
Force controlled electronically	✓	✓	✓	✓	✓
Force reduced at start and end of cycle	✓	✓	✓	✓	✓
50mm lowering and raising of the polishing head	✓	✓	✓	✓	-
Automatic locking of the polishing head	✓	✓	✓	✓	✓
200cc (x2) lubricant included in the polishing head	✓	✓	✓	✓	✓
Sweeping function	-	-	-	-	✓

ACCESSORIES (100% COMPATIBLE WITH THE OLDER GENERATION)



**Almagtech platen**  
 ø 200 mm. Ref. 67822  
 ø 250 mm. Ref. 67820  
 ø 300 mm. Ref. 67821



**PVC lid**  
 ø 250 mm. Ref. 66050  
 ø 300 mm. Ref. 66025



**Air compressor**  
 (in case of no compressed  
 air supply)  
 Ref. 67750

## POLISHING HEAD ACCESSORIES

### SPECIMEN HOLDERS FOR CENTRAL PRESSURE POLISHING

Ref.			250 SPI	250 SPC	250 DPC	300 SPC	300 SPS
57120	Specimen holder Ø120 mm	for 3 samples Ø25 to 32 mm	-	✓	✓	-	-
57126	Specimen holder Ø140 mm	for 6 samples Ø25 to 32 mm	-	✓	✓	-	-
57125	Specimen holder Ø140 mm	for 3 samples Ø30 to 40 mm	-	✓	✓	-	-
57102	Specimen holder Ø160 mm	for 6 samples Ø25 to 32 mm	-	✓	✓	✓	✓
57103	Specimen holder Ø160 mm	for 4 samples Ø30 to 40 mm	-	✓	✓	✓	✓
57104	Specimen holder Ø160 mm	for 4 samples Ø40 to 50 mm	-	✓	✓	✓	✓
57106	Specimen holder Ø160 mm annular holding	for 6 samples Ø30 mm	-	✓	✓	✓	✓
57107	Specimen holder Ø160 mm annular holding	for 4 samples Ø40 mm	-	✓	✓	✓	✓
57105	Blank specimen holder	Ø160 mm	-	✓	✓	✓	✓
57119	Specimen holder Ø170 mm	for 6 samples Ø30 to 40 mm	-	✓	✓	✓	✓
57108	Specimen holder Ø210 mm	for 12 samples Ø25 to 32 mm	-	✓	✓	✓	✓
57109	Specimen holder Ø210 mm	for 8 samples Ø30 to 40 mm	-	-	-	✓	✓
57110	Specimen holder Ø210 mm	for 6 samples Ø50 mm	-	-	-	✓	✓
57114	Specimen holder Ø210 mm	for 6 rectangular samples 30 x 55mm	-	-	-	✓	✓
57111	Specimen holder Ø220 mm	for 3 rectangular samples 50 x 100mm	-	-	-	✓	✓
57116	Compulsory hooking system	for central pressure specimen holder	-	✓	✓	✓	✓
57162	Levelling press for samples		-	✓	✓	✓	✓

### SPECIMEN HOLDERS FOR INDIVIDUAL PRESSURE POLISHING

Ref.			250 SPI	250 SPC	250 DPC	300 SPC	300 SPS
57142	Specimen holder Ø140 mm	for 4 samples Ø30 mm	✓	-	-	-	-
57141	Specimen holder Ø150 mm	for 4 samples Ø40 mm	✓	-	-	-	-
57144	Specimen holder Ø150 mm	for 4 samples Ø38,1 mm	✓	-	-	-	-
67830	Specimen holder Ø150 mm	for 6 samples Ø30 mm	-	✓	✓	✓	-
57145	Specimen holder Ø160 mm	for 6 samples Ø38,1 mm	-	✓	✓	✓	-
67833	Specimen holder Ø160 mm	for 6 samples Ø40 mm	-	✓	✓	✓	-
57143	Specimen holder Ø170 mm	for 3 samples Ø50 mm	-	✓	✓	-	-
67835	Specimen holder Ø170 mm	for 6 samples Ø50 mm	-	-	-	✓	-
67838	Specimen holder Ø180 mm	for 8 samples Ø30 mm	-	-	-	-	✓
67837	Specimen holder Ø190 mm	for 8 samples Ø40 mm	-	-	-	-	✓
67836	Specimen holder Ø200 mm	for 8 samples Ø50 mm	-	-	-	-	✓

### REDUCTION RINGS FOR SPECIMEN HOLDERS

Ref.			250 SPI	250 SPC	250 DPC	300 SPC	300 SPS
67850	1 reduction ring	Ø 50 mm ▶ Ø 25 mm	-	✓	✓	✓	✓
67851	1 reduction ring	Ø 50 mm ▶ Ø 25,4 mm	-	✓	✓	✓	✓
67852	1 reduction ring	Ø 50 mm ▶ Ø 30 mm	-	✓	✓	✓	✓
67853	1 reduction ring	Ø 50 mm ▶ Ø 31,7 mm	-	✓	✓	✓	✓
67854	1 reduction ring	Ø 50 mm ▶ Ø 38,1 mm	-	✓	✓	✓	✓
67855	1 reduction ring	Ø 50 mm ▶ Ø 40 mm	-	✓	✓	✓	✓
67856	1 reduction ring	Ø 40 mm ▶ Ø 25 mm	✓	✓	✓	✓	✓
67857	1 reduction ring	Ø 40 mm ▶ Ø 25,4 mm	✓	✓	✓	✓	✓
67858	1 reduction ring	Ø 40 mm ▶ Ø 30 mm	✓	✓	✓	✓	✓
67859	1 reduction ring	Ø 40 mm ▶ Ø 31,7 mm	✓	✓	✓	✓	✓



[WWW.HOSKIN.CA](http://WWW.HOSKIN.CA)

- ENVIRONMENTAL • INSTRUMENTATION • MATERIALS TESTING
- INTEGRATED SYSTEMS • RENTALS • SERVICE

Vancouver | Oakville | Montréal | Edmonton