

The lever operated TSA750 is ideal for quick-action testing of up to 750 lbF (3.75 kN) of tensile or compressive force. Made of rugged components, this test stand is durable enough for the factory floor, yet precise enough for laboratory environments. The loading lever can be positioned in 30° increments and the adjustable precision ground rack and pinion mechanism assures smooth, precise motion through 6 in. of travel.

The test stand includes adjustable travel stops and a frictional low force brake. It is available in vertical and horizontal orientations. Use this test stand with Mark-10 force gauges and gripping fixtures to create a complete push/pull testing system.

## Specifications

<b>Load capacity:</b>	750 lbF [3.75 kN]
<b>Maximum travel:</b>	With travel stops: 2.75 in [69.9 mm] Without travel stops: 6 in [152.4 mm]
<b>Loading method:</b>	Rack and pinion, lever can be positioned in 30° increments
<b>Travel rate:</b>	3 in [76.2 mm] per lever rev.
<b>Weight:</b>	TSA750: 16 lb [7.3 kg] TSA750H: 13 lb [5.9 kg]
<b>Warranty:</b>	3 years (see individual statement for further details)

## Optional Equipment



**Digital travel display TSA001** 6 in [150 mm] travel, 0.0005 in [0.01 mm] resolution, 0.001 in [0.03 mm] accuracy, SPC output for data collection.



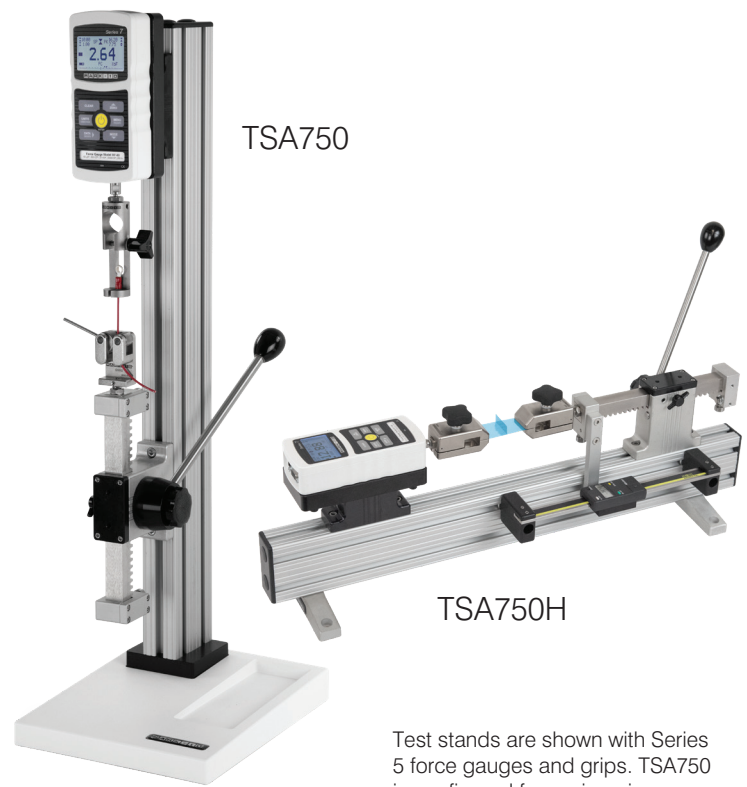
**Horiz. mounting kit TSA002** Converts to horizontal orientation, for alternative mounting arrangements.



**Mounting table kit TSA003** Contains a mounting plate with matrix of threaded holes for grip and fixture mounting.

## Ordering Information

Model No.	Description
<b>TSA750</b>	Test stand, lever-operated, 750 lbF, vertical
<b>TSA750H</b>	Test stand, lever-operated, 750 lbF, horizontal
<b>TSA001</b>	Digital travel display for TSA750/TSA750H
<b>TSA002</b>	Horizontal / wall mounting kit
<b>SP-2734-12</b>	Column extension, 12 in. / 305 mm
<b>SP-2734-24</b>	Column extension, 24 in. / 610 mm
<b>SP-2734-42</b>	Column extension, 42 in. / 1065 mm



Test stands are shown with Series 5 force gauges and grips. TSA750 is configured for a wire crimp pull test, while the TSA750H is configured for a peel test.

## In The Box

The TSA750 and TSA750H test stands are shipped as shown above, and include the following accessories:

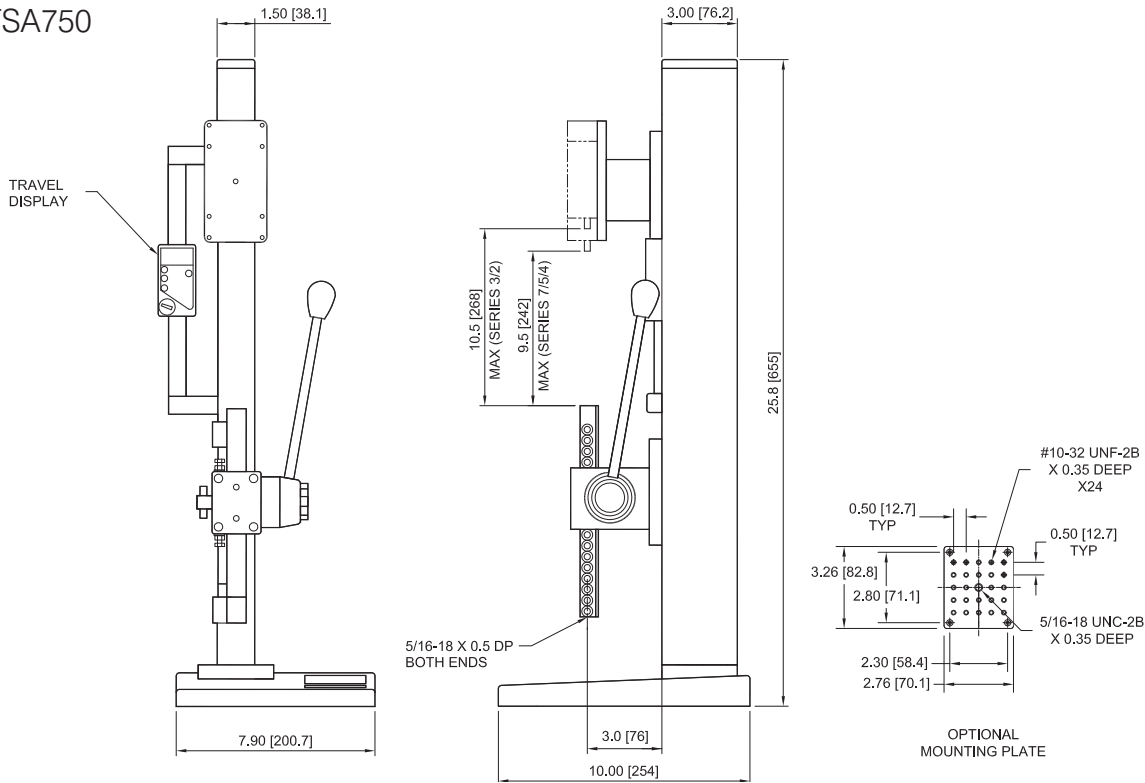


- (1) G1028 small hook
- (1) G1038 medium hook
- (1) G1035 large hook
- (1) G1042 extra large hook
- (1) G1009 compression plate, 2" dia.
- (2) #10-32 stud with jam nuts
- (4) Thumb screw for force gauges with 0.12 - 500 lbF capacities
- (4) Thumb screw for force gauges with 1,000 - 2,000 lbF capacities
- (1) Allen wrench set
- (1) Base (TSA750)
- (2) Mounting leg with hardware (TSA750H)
- (1) Additional column cap with hardware (TSA750H)

## Dimensions

in [mm]

### TSA750



### TSA750H

