

Environmental Triaxial Testing System (ETTS)



Overview: The Environmental Triaxial Testing System (ETTS) is a temperature controlled testing system for stress path testing. Key features include:-

- Frozen Soil Testing
- Gas Hydrate Testing
- High Pressure Testing
- High & Low Temperature Testing

The -20°C cooling system provides ideal conditions for frozen soil testing. Its high pressure testing capability (up to 10MPa) along with low temperature provides the ideal environment for Gas Hydrate Testing. The system also has the option for a Heating only system.

Key Features:

Benefits to the User:

Heating & Cooling Options: -20°C to +65°C	The cooling system uses a coiled tube section inside the cell, this is connected through the standard ports within the cell base to a glycol cooling unit allowing temperature transfer close to the specimen.
Optional Heating Only System: Ambient to 60°C Ambient to 100°C	The heating system works using thermal pads attached to the outside of the triaxial cell then enclosed within an environmental chamber to retain the heat. There are up to 4 temperature sensors relaying back to the control box for enhanced temperature accuracy.
High Pressure (Up to 10MPa):	High Pressure combined with low temperature make it ideal for Gas Hydrate testing.
Gas Hydrate Testing (Gaseous back pressures):	The ETTS be adapted for gaseous back pressures such as Air, Carbon Dioxide, Nitrogen or Methane for Gas Hydrate testing.
Frozen Soil Testing:	Cooling to -20°C provide ideal conditions for frozen soil testing.

Tests that can be Performed:

B-check, consolidated drained (CD) triaxial, consolidated undrained (CU) triaxial, consolidation (Triaxial), constant rate of loading (CRL), constant rate of strain (CRS), slow cyclic testing, K0 (K-Zero), multi-stage testing, quasi-static (low speed/ creep) tests, stress paths and unconsolidated undrained (UU) triaxial. All tests can be performed with complete control of specimen temperature.

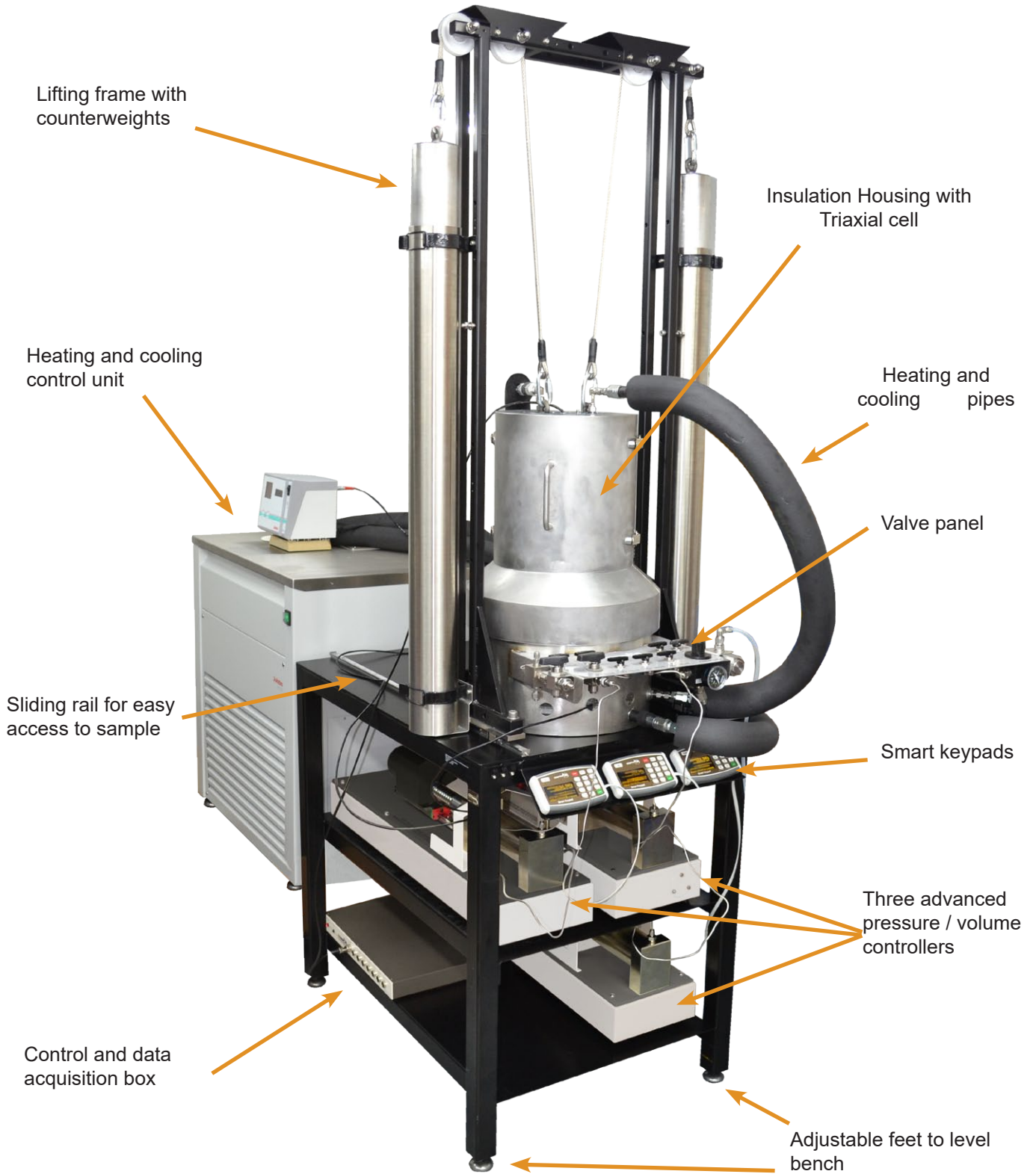
Upgrade Options:

LVDT strain set, cell top lifting frame, high pressure bishop & wesley (without heating & cooling).

Technical Specification:

Pressure range (MPa):	10
Sample Size (mm):	Max length: 100, Max diameter: 55
Available Temperature Ranges: Heating Only: Heating & Cooling:	Ambient 65°C, Ambient to 100°C -20°C to +65°C

Fig 1. Key features of the ETTS



GDSLAB Control Software

GDSLAB is the control and data acquisition software for geotechnical laboratory applications. GDSLAB starts with a core application known as the kernel. The GDSLAB kernel allows for data acquisition from your hardware, but no test control. Simply add the appropriate module or modules to complete the test suite functionality you require. GDSLAB is compatible with all existing GDS equipment and furthermore key hardware from other manufacturers.

GDSLAB has the ability to be to your hardware of choice, no matter how unique the arrangement. A text (*.ini) or initialisation is created that describes the hardware connectivity to the PC. The hardware layout is available in graphical format via the GDSLAB 'object display'. This makes setting up the devices and checking the connectivity extremely simple.

GDSLAB REPORTS Presentation Software

GDSLAB REPORTS software presents data obtained by GDSLAB to the National Standard, BS 1377:1990. The program can be used to present data whether obtained from a GDSLAB data or inputted by hand.

GDSLAB Reports can as be used with other manufacturer's dataloggers as well as all versions of GDS data logger. The results can be exported as a CSV into Microsoft Excel, allowing the user to customise the layout of results.

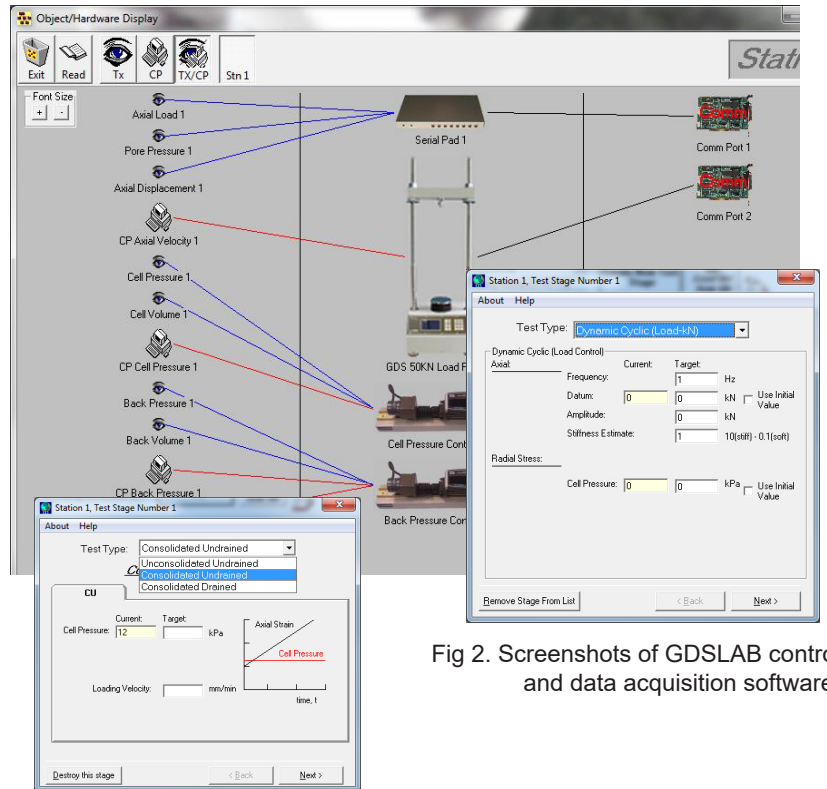


Fig 2. Screenshots of GDSLAB control and data acquisition software.

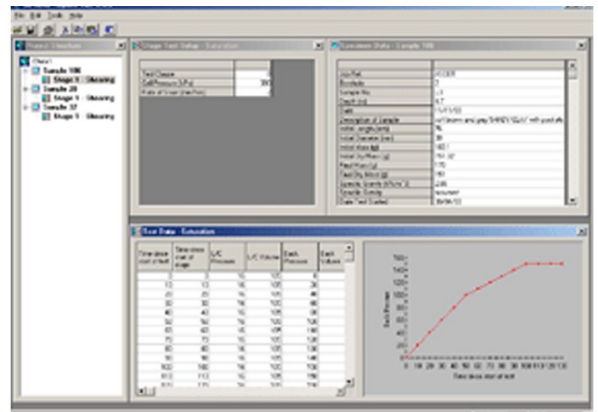


Fig 3. Screenshot from the GDSLAB Reports.

Note: Required Operating System: Windows 7 SP1 or higher (We strongly recommend that Windows is fully up to date and running the latest Service Pack/Version available). Recommended PC Specification: 2GHz processor, 4GB Ram, 64Bit Operating System and USB connectivity. Note: GDS software can run on lower spec PC's however; performance and processing of data may be affected.

Applications



Frozen Soils



Gas Hydrate

Images courtesy of : U.S. Geological Survey
Department of the Interior/USGS
U.S. Geological Survey/photo by Suzanne
Weedman (Frozen Soils) & J. Pinkston and
L. Stern (USGS - Gas Hydrate &)

Technical Specification

Load Frame & Triaxial Cell:

Load Range (kN):	Up to 2500
Pressure Range (MPa):	Up to 10
Sample Sizes (mm):	Up to 150 diameter

Temperature Control:

Combined Cooling / Heating:	-20°C to +65°C
Heating Only System:	Ambient to 65°C, Ambient to 100°C
Cooling Only System:	Ambient to -20°C
Computer Interface:	RS232 serial cable

Data Acquisition:

8 Channel Serial Pad:	May be used within any of the system combinations. This 16 bit device has 8 computer controlled gain ranges, designed to suit transducers used in a triaxial test.
------------------------------	--

Pressure Controllers:

ELDPC:	Available in one 1MPa pressure and 200cc volume.
STDDPC:	Available in 200cc only, but with pressure ranges from 100kPa to 4MPa (default is 3MPa).
ADVDPCC:	Available in pressure ranges from 100kPa to 8000kPa and a volumetric capacity of 200cm ³ , or up to 2000kPa with avolumetric capacity of 1000cm ³ .
HPDPC:	The high pressure version is available in pressure ranges from of 8MPa to 150MPa and a volumetric capacity of 200cm ³ . High pressure controllers can be used with water, oil or air.

Software:

GDSLAB:	Control and acquisition software.
GDSLAB Reports:	A program to produce results from data obtained by GDSLAB to National Standards, BS 1377:1990, ASTM D2850, D4767, D7181.
Available Test Modules:	SatCon (saturation & consolidation), Standard Triaxial (strain-controlled shearing), K0 Consolidation, Permeability, Stress Paths (q-p and s-t linear paths), Advanced Loading, 4D Unsat (stress paths for unsaturated soil).

Upgrade Options:

Bender Elements:	The system can be upgraded to perform P and S wave bender element testing.
Unsaturated Testing:	The system may be upgraded to perform Unsaturated Testing using Method A or D (Method B on request).
Local Strain Transducers:	Hall Effect transducers may be used in water up to 1700kPa. LVDT transducers come in 2 versions low pressure (up to 3500 kPa) version for use in water & high pressure (up to 200 MPa) version for use in nonconducting oil.
Gaseous Back Pressures:	Air, Carbon Dioxide, Nitrogen & Methane.

Why Buy GDS?

GDS have supplied equipment to over 84% of the world's top 50 Universities:

GDS have supplied equipment to over 84% of the world's top 50 Universities who specialise in Civil & Structural Engineering, according to the "QS World University Ranking 2019" report.

GDS also work with many commercial laboratories including BGC Canada, Fugro, GEO, Geolabs, Geoteko, Golder Associates, Inpijn Blokpoel, Klonn Crippen, MEG Consulting, Multiconsult, Statens Vegvesen, NGI, Ramboll, Russell Geotechnical Innovations Ltd, SA Geolabs, SGS, Wiertsema and Partners to name a few.

**TOP
50**

Would you recommend GDS equipment to your colleague, friend or associate?

100% of our customers answered "YES"

Results from our post-delivery survey asked customers for feedback on their delivery, installation (if applicable), supporting documentation, apparatus and overall satisfaction with GDS. The survey ran for two years.



Made in the UK:

All GDS products are designed, manufactured and assembled in the UK at our in Hook. All products are quality assured before they are dispatched.

GDS are an ISO9001:2015 accredited company. The scope of this applies to the approved quality administration systems relating to the "Manufacture of Laboratory and Field Testing Equipment".

**40 YEARS OF
BRITISH
INNOVATION** 

Extended Warranties:

All GDS apparatus are covered by a 12 month manufacturers warranty. In addition to the standard warranty, GDS comprehensive extended warranties for 12, 24 and 36 months, for peace of mind against any repairs in the future. The extended warranties can be purchased at any time during the 12 months of ownership.



GDS Training & Installation:

All installations & training are carried out by experienced engineers. A GDS engineer is assigned to each order throughout the sales process. They will quality assure the apparatus prior to shipping, if installation has been purchased, install the apparatus on the customers site & provide the training.



Technical Support:

GDS understand the need for ongoing after sales support, so much so that they have their own dedicated customer support centre. Alongside their support centre GDS use a variety of additional support methods including remote PC support, product helpsheets, video tutorials, email and telephone support.

