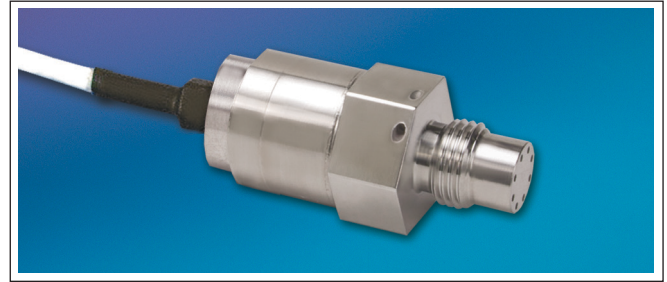




MINIATURE 4-20mA OUTPUT PRESSURE TRANSDUCER

ETM-200-375 (M) SERIES

- 4-20mA Output
- 2 Wire Operation
- Hybrid Microelectronic Signal Conditioner
- Silicon on Silicon Integrated Sensor **VIS®**
- Flush Diaphragm
- All Welded Construction
- Secondary Containment On Absolute And Sealed Gage Units
- Aerospace Quality Components
- 3/8-24 UNJF or M10 X 1 Thread
- Intrinsically Safe Applications Available (i.e. IS-ETM-200-375)



ETM-200-375 and ETM-200-375M transducers employ the same approach to transducer construction as the standard ETM-375 and ETM-375M series. The Kulite proprietary electronics module in this product line, however, provides a current output signal (4 to 20

mA). These instruments are an excellent choice for applications requiring the current output signal but in which space and/or weight are at a premium.

OPTIONAL CONNECTOR VERSION HERMETICALLY SEALED

PIN	DESIGNATION
A	+ INPUT
B	- INPUT

P/N	"T"
375	3/8-24 UNJF-3A
375M	M 10 x 1

CONSULT FACTORY FOR SPECS. ON SEALED GAGE

WIRING	
COLOR	DESIGNATION
RED	+ INPUT
BLACK	- INPUT

	17 250	35 500	70 1000	170 2500	350 5000	700 10000	1400 BAR 20000 PSI
INPUT							
Pressure Range							
Operational Mode	Absolute, Gage, Sealed Gage						
Over Pressure	2 Times Rated Pressure to 1000 PSI (70 BAR) 1.5 Times Rated Pressure Above 1000 PSI to a Max. of 30000 PSI (2100 BAR)						
Burst Pressure	3 Times Rated Pressure to a Max. of 35000 PSI (2400 BAR)						
Pressure Media	Any Liquid or Gas Compatible With 15-5 PH or 316 Stainless Steel						
Minimum Voltage Required	9 V Minimum Voltage Required Across The Input and Output Wires						
Rated Electrical Excitation	12 - 32 VDC						
OUTPUT							
Output	4 - 20 mA						
Bandwidth (-3dB)	DC to 750 Hz						
Combined Non-Linearity, Hysteresis and Repeatability	± 0.1% FSO BFSL (Typ.), ± 0.5% FSO (Max.)						
Resolution	Infinitesimal						
Natural Frequency of Sensor Without Screen (KHz) (Typ.)	Greater Than 400 KHz						
Acceleration Sensitivity % FS/g Perpendicular	2.2x10 ⁻⁴	1.1x10 ⁻⁴	6.2x10 ⁻⁵	2.6x10 ⁻⁵	1.5x10 ⁻⁵	1.3x10 ⁻⁵	8.0x10 ⁻⁶
Insulation Resistance	100 Megohm Min. @ 50 VDC						
ENVIRONMENTAL							
Operating Temperature Range	-65°F to +250°F (-55°C to +120°C)						
Compensated Temperature Range	0°F to +212°F (-18°C to +100°C) Other Ranges Quoted on Request						
Thermal Zero Shift	± 1% FS/100° F (Typ.)						
Thermal Sensitivity Shift	± 1% /100° F (Typ.)						
Linear Vibration	100g Peak, Sine up to 5000 Hz						
Mechanical Shock	100g half Sine Wave 11 msec. Duration						
PHYSICAL							
Electrical Connection	2 Conductor 26 AWG Shielded Cable 36" Long						
Weight	24.5 Grams (Max.) Excluding Cable						
Pressure Sensing Principle	Fully Active Four Arm Wheatstone Bridge Dielectrically Isolated Silicon on Silicon						
Mounting Torque	80 Inch-Pounds (Max.)						