

Micro Analytical Balances

BM

Series

BM-20

22 g × 0.001 mg (1 µg)

BM-22 (Smart range)

22 g × 0.01 mg

5.1 g × 0.001 mg (1 µg)

BM-252

250 g × 0.01 mg

BM-200

220 g × 0.1 mg

BM-300

320 g × 0.1 mg

BM-500

520 g × 0.1 mg



Built-in Fanless Ionizer!



CERTIFIED

A&D
A&D Company, Limited

...Clearly a Better Value

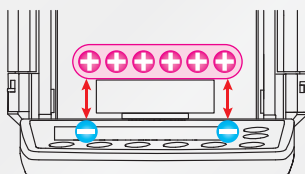
How to Eliminate the Greatest Enemy of Precision Weighing

Static electricity, while often overlooked, can be a fatal source of error in precise weight measurements. With the BM Series, A&D seek in various ways to help you perform sometimes-tricky analytical weighing with simplicity and accuracy, including the elimination of static electricity. The world of micro grams (μg) is now accessible to all researchers!

Errors due to static electricity

An electrostatically charged object induces the opposite charge in nearby objects. The attraction between the two charges causes an inaccurate value.

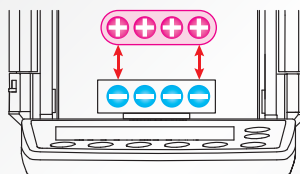
1



Error when weighing a charged object

The value will be shifted in the positive direction. It then gradually changes as static electricity is discharged into the air or via the weighing pan.

2



Error when a charged object approaches

The value will be shifted in the negative direction. Static induction from a charged object like clothing (frequent in dry winters) can be a cause of a drifting value.

Built-in Fanless Ionizerⁱ

*i Patented

The internal ionizer neutralizes an electrostatically charged object instantly. Simply hold the sample in the neutralizing chamber for a second before placing it in the weighing chamber.

■ Direct-current (DC) method

The DC ionizer is fanless so you can even neutralize fine powders without having them blown away.

■ Long life of approximately 10,000 hours

The discharge electrode pins of the ionizer can be used continuously for approximately 10,000 hours and are safely replaceable.

Please also visit our video library at www.aandd.jp to see how you can easily eliminate static electricity from the sample!

Anti-static Breeze Break

The thin evaporated metal coating of the breeze break blocks outside static electricity.



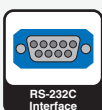
Internal Calibration



Reverse Backlit LCD



Quick USB



RS-232C Interface



GLP Compliant



Clock & Calendar



Data Memory Function

Optional



LAN-Ethernet Interface



Counting with A&A



Percentage Function



Auto Power ON



Underhook

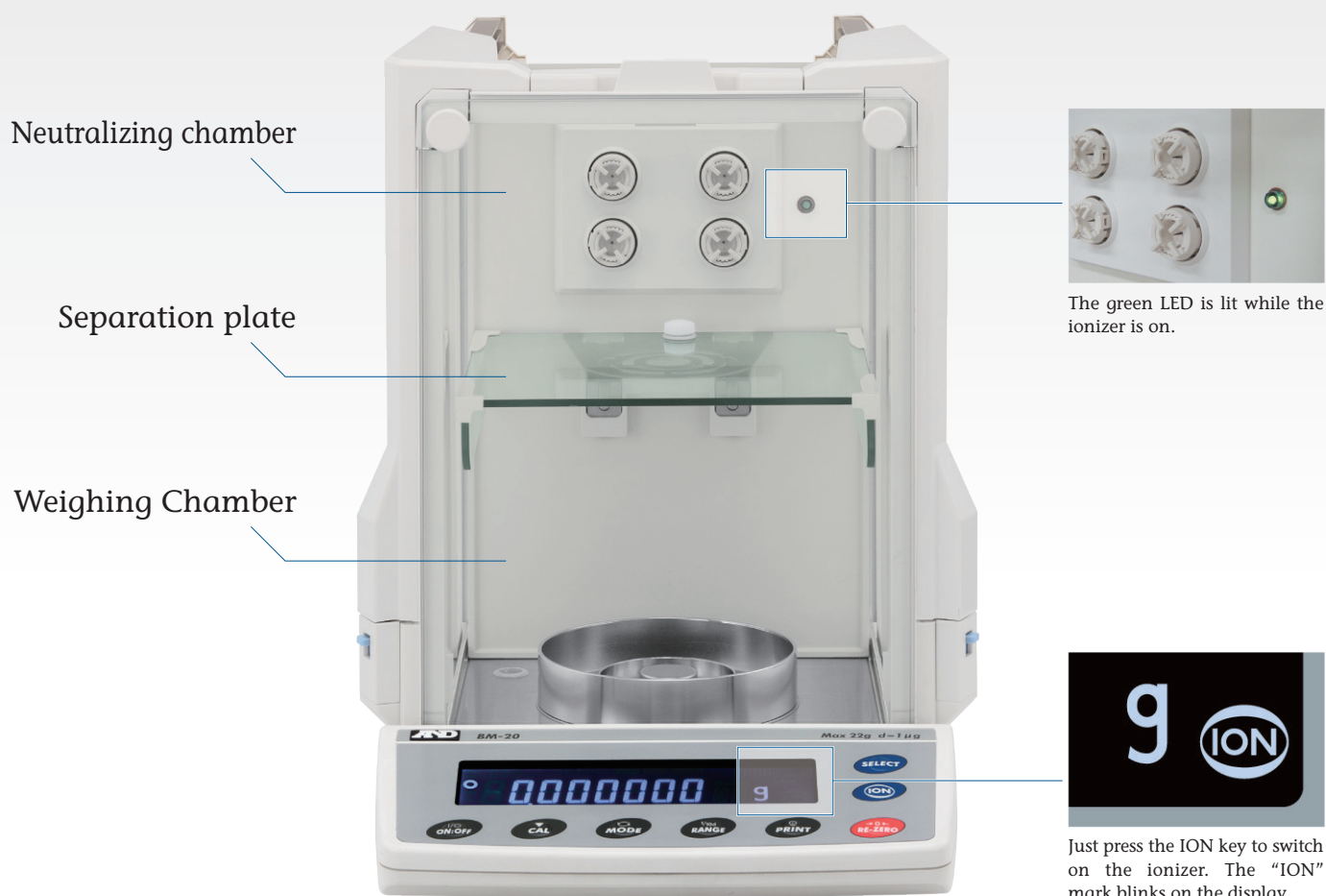


Smart Range



Software

BM-22



Motor-driven Internal Calibration Mass

The internal mass of the BM Series allows you to perform calibration quickly and correctly even if you are not skilled at calibrating balances using external masses.

Automatic Self Calibration

The balance can self-calibrate automatically when it detects a change in ambient temperature.

One Touch Automatic Calibration

The accuracy of your balance is assured with one key press.

Automatic Response Adjustment

The balance automatically adjusts its response characteristics (FAST, MID, or SLOW) by analyzing the influence of drafts or vibrations on the stability of the display value. (Manual adjustment is also possible.)

Special Pans and Holder

The BM-20/22 includes three sizes (10 pieces each) of aluminum analytical pans, two pans for weighing PM filtersⁱⁱ, and a microfuge tube holder as standard.

***ii Particulate matter**



Aluminum analytical pans
ø8 mm (0.05 ml) / ø12 mm (0.3 ml) / ø15 mm (0.8 ml)



Weighing pans for PM filters
ø50 mm / ø95 mm

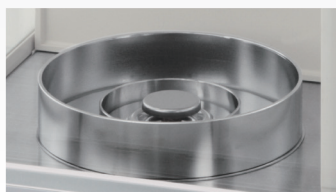


Microfuge tube holder

Large Weighing Chamber for Improved Usabilityⁱⁱⁱ

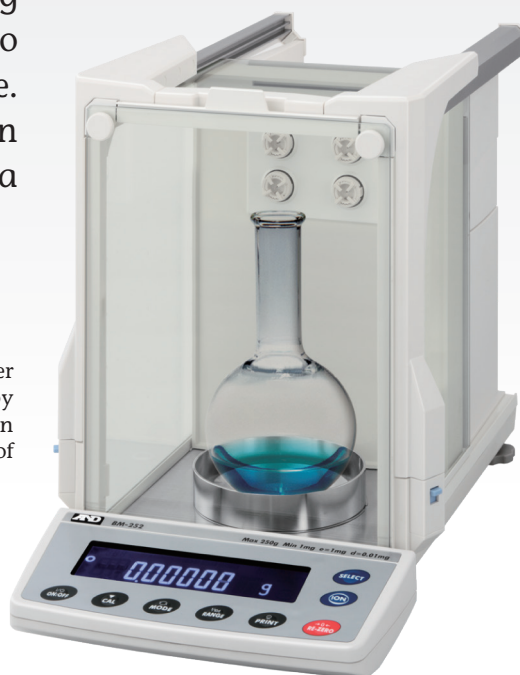
*iii Patent Pending

To block drafts, A&D adopted a double-ring structure around the weighing pan and two vertical shields under the separation plate. This offers more space and easier operation than conventional 1 μ g balances with a secondary breeze break in the chamber.



Double-ring structure
(for BM-20/22)

A large flask or cylinder can be weighed by removing the separation plate (for a resolution of 10 μ g or higher).



Clear, Reverse Backlit LCD

The contrast of black and white display provides excellent readability.

Interlockable Sliding Doors

It is possible to slide a door open using the handle on the opposite side. Effective use of both hands lets you perform weighing more efficiently.



The "door" sign is displayed until the two side doors are completely closed.)

Built-in Environmental Sensors

The balance displays the temperature, humidity, and atmospheric pressure for users who need to record these environmental conditions.

Multiple Weighing Units

You can easily select from g, mg, oz, ozt, ct, mom, dwt, grain, specific gravity, in addition to PC (counting mode) and % (percent mode). Either tael or tola can be added upon request.

Density Determination Function

For the BM-252/200/300/500, an optional density determination kit (AD-1653) is available for easy calculations of density.

Diverse Data Management Solutions

Data Memory Function

The balance can store up to 200 sets of weighing data (100 sets with date & time) or 50 sets of calibration history data.

GLP/GMP/GCP/ISO Compliant Output

In accordance with the Good Laboratory Practice (GLP), the balance can output the balance manufacturer, model, serial number, ID number, date, time, calibration mass used, space for signature, etc.

Two Types of Interfaces – RS-232C and Quick USB^{iv} (standard)

Two different devices (e.g. PC and remote controller) can be connected simultaneously to a balance. An external key jack for the optional foot switches (AX-SW137-PRINT/REZERO) is also available as standard.



^{iv} Weighing data transfer from the balance to a PC only. Please use the AX-USB-9P for two-way communication or GLP output via USB.

Ethernet Interface (BM-08, optional) with WinCT-Plus Software

You can send commands for controlling and acquiring data from multiple balances.



AD-1688 Weighing Data Logger (Standard Accessory)

The AD-1688 is a handheld device (55 × 103 × 16.5 mm) that stores up to 5,000 weighing results with date and time. You can retrieve the saved data later by connecting the AD-1688 to a USB port of your computer (no driver software is necessary).



Save



Carry



and Retrieve the Data!

Specifications

	BM-20	BM-22	BM-252	BM-200	BM-300	BM-500
Weighing capacity	22 g	5.1 g / 22 g ^v	250 g	220 g	320 g	520 g
Minimum weighing value	0.001 mg	0.001 mg / 0.01 mg	0.01 mg	0.1 mg		
Repeatability (standard deviation)	0.0025 mg (for 1 g)	0.004 mg (for 1 g) / 0.01 mg	0.03 mg (for 100 g)	0.1 mg	0.2 mg	
Linearity	±0.010 mg	±0.010 mg / ±0.02 mg	±0.10 mg	±0.2 mg	±0.3 mg	±0.5 mg
Stabilization time (when set to FAST)	Approx. 10 secs	Approx. 10 secs / 8 secs	Approx. 8 secs	Approx. 3.5 secs		
Sensitivity drift	±2 ppm / °C (10 °C to 30 °C, when automatic self calibration is not used)					
Operating temperature	5 °C to 40 °C (41 °F to 104 °F), 85%RH or less (no condensation)					
Display refresh rate	5 times / second or 10 times / second					
Display mode	g, mg, oz, ozt, ct, mom, dwt, grain, PC (counting mode), % (percent mode), specific gravity (Either tael or tola can be added upon request.)					
Counting mode	Minimum unit mass	0.1 mg				
	Number of samples	10, 25, 50 or 100 pieces				
Percent mode	Minimum 100% reference mass	10.0 mg				
	Minimum 100% display	0.01%, 0.1%, 1% (depends on the reference mass stored)				
Standard interface	RS-232C, Quick USB					
Internal calibration	Motor-driven internal calibration					
Applicable masses for external calibration	20 g, 10 g, 5 g, 2 g, 1 g		200 g, 100 g 50 g, 20 g, 10 g	200 g, 100 g, 50 g	300 g, 200 g 100 g, 50 g	500 g, 300 g 200 g, 100 g, 50 g
Discharge electrode pins of the ionizer	Life approx. 10,000 hours (continuous use)					
Weighing pan (diameter)	25 mm		90 mm			
Power consumption	Approx. 30 VA (supplied to the AC adaptor)					
External dimensions	259 (W) × 466 (D) × 326 (H) mm					
Net weight	Approx. 10 kg					
Standard accessories	AC adapter, Weighing data logger (AD-1688), Tweezers for calibration mass (AD-1689) Tweezers and two weighing pans for PM filters ^{vi} , Microfuge tube holder ^{vi} , Three sizes of aluminum analytical pans (10 pcs each) ^{vi} , Slide breeze break (AX-BM-035) ^{vi}					

* v : Smart range function: The minimum weighing value will switch to 0.01 mg automatically when the display value exceeds 5.1 g but returns to 0.001 mg by pressing the RE-ZERO (tare) key.
 * vi : For BM-20/22 only.

Options

BM-08^{vii} Ethernet interface with WinCT-Plus software

BM-014 Pipette accuracy testing kit

* vii : BM-08 and the standard Quick USB interface cannot be used at the same time.

External Dimensions (mm/inches)

Pan size	A
Model	
BM-20/22	Ø25 / 0.98
BM-252/200/300/500	Ø90 / 3.54

Accessories

AD-1653

Density determination kit
(for BM-252/200/300/500 only)

AD-1671 Anti-vibration table for balances

AD-1672 / AD-1672A Tabletop breeze break

AD-1682 Rechargeable battery unit

AD-1684A Electrostatic fieldmeter

AD-1687 Weighing environment logger

AD-1689 Tweezers for calibration mass

AD-8127 Compact printer

AD-8526 Serial/Ethernet converter

AD-8920A Remote display

AD-8922A Remote controller

AX-BM-031 Display covers (5 pcs)

AX-BM-032 Microfuge tube holder (for BM-20/22 only)

AX-BM-033 Dust cover for storage

AX-BM-035 Slide breeze break (for BM-20/22 only)

AX-BM-NEEDLESET Electrode units

AX-ROUND-PAN-L Aluminum analytical pans (Ø15 mm, 100 pcs)

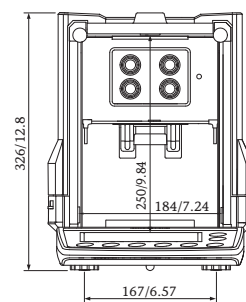
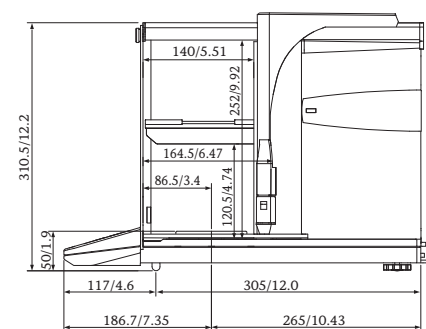
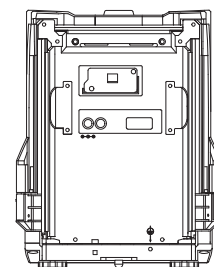
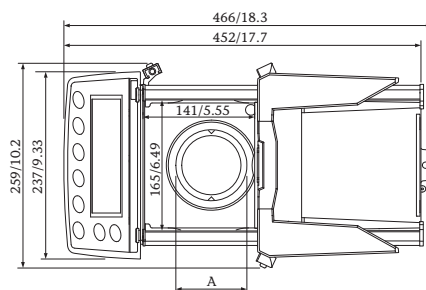
AX-ROUND-PAN-M Aluminum analytical pans (Ø12 mm, 100 pcs)

AX-ROUND-PAN-S Aluminum analytical pans (Ø8 mm, 100 pcs)

AX-SW137-PRINT Foot switch for print (with connector)

AX-SW137-REZERO Foot switch for re-zero (with connector)

AX-USB-9P Serial/USB converter



WWW.HOSKIN.CA

• INTEGRATED SYSTEMS • RENTALS • SERVICE
 • ENVIRONMENTAL • INSTRUMENTATION • MATERIALS TESTING

Vancouver | Burlington | Montréal | Edmonton