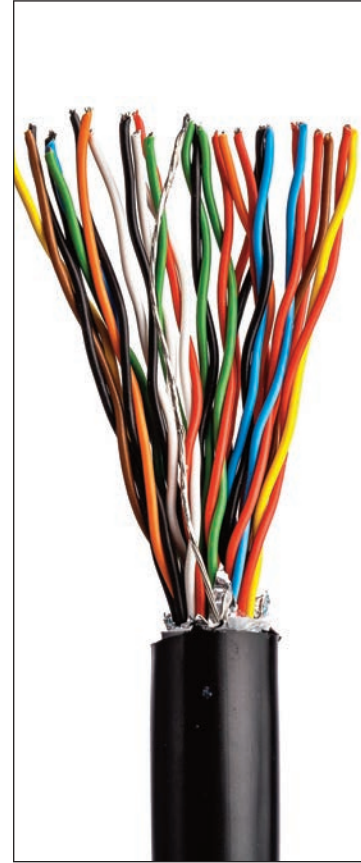


Multi-core Cable (Foil & Drain Wire) 13mm

Geosense Part No Q10-045
Type 910/TP/30/240/PE/BK/13.0

Specifications

Conductor	
Material	Tinned Copper
Conductor No	30
Construction	Twisted Pair 15x2
Section	24 AWG (0.22mm ²)
Insulation	
Material	Low Smoke & Fume
Colour	Multi
Core Identification	Colour Chart 3
Shielding	
Screen	Overall Aluminium Foil
Drain Wire	24 AWG (0.22 ²)
Jacket	
Diameter	13mm
Material	PE
Colour	Black
Technical	
Weight	270kg/km
Minimum Bend Radius	10 x diameter
Rated Temperature	+80°C
Voltage Rating	300V
Voltage Rating Test	2000V (for 1 minute)
Conductor Resistance	84 Ω/km
Nominal Capacitance C/C	98 pF/m
Nominal Capacitance C/S	164 pF/m
Compliance	
RoHS 2	2011/65/EU
LVD	2006/95/EC
Manufactured to	UL 2464
Flame Retardant	IEC 60332-1-2
Additional Information	
Inner Sheath	Low Smoke & Fume



Usage guide

- ~ Multipoint piezometers
- ~ Thermistors



WWW.HOSKIN.CA

- ENVIRONMENTAL
- INSTRUMENTATION
- MATERIALS TESTING
- INTEGRATED SYSTEMS
- RENTALS
- SERVICE

Vancouver | Oakville | Montréal | Edmonton