



CI-202

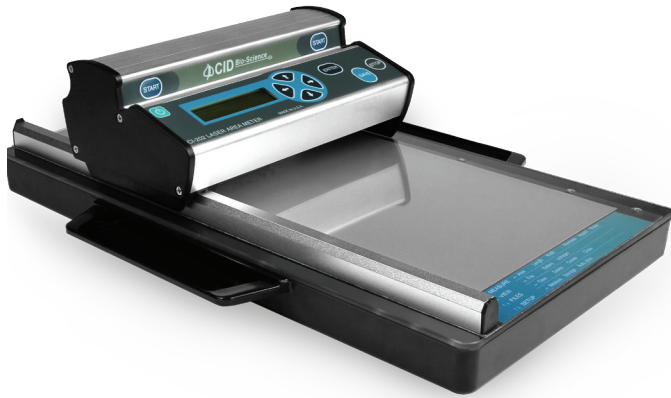
■ Portable Laser Leaf Area Meter



Durable and Field-Ready

Collect precise leaf area measurements with this high-resolution, battery-powered laser scanner. Durable and self-contained, researchers use the CI-202 in the field or in the lab to measure virtually any type of leaf, needle, or seed. Store more than 8000 data points on the device and export for further statistical analysis.

Product Features



Applications

- ▶ Botanists use the CI-202 to quantify phenotypic changes of measure leaf area in-situ
- ▶ Plant physiologists use the CI-202 to measure leaves and relate changes in shape characteristic to physiological function
- ▶ Scientists apply the CI-202 to a range of organic and inorganic materials, like seeds, wings, and manufactured parts

To see a full list of application resources including published research with the **CI-202 Portable Laser Leaf Area Meter**, please visit:
www.cid-inc.com/applications

- ▶ Measures area, length, width, and perimeter and calculates shape factor and ratio
- ▶ Non-destructive and versatile
- ▶ Flattens curled leaves to provide precise measurements
- ▶ Resolution of .01cm²
- ▶ Simple, straight-forward operation
- ▶ Stores up to 8,000 single measurements
- ▶ Lightweight and self-contained instrument with built-in data logger and LCD display
- ▶ Rechargeable battery
- ▶ USB port transfers data to computer and charges the device as needed
- ▶ No user calibration required
- ▶ Includes operational manual and hard-shell carrying case

